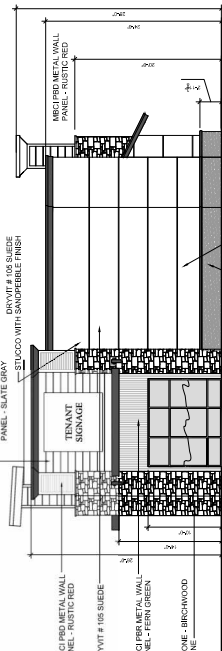
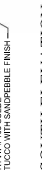
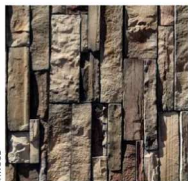
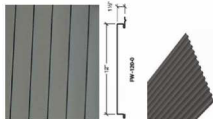




REVISIONS	
DATE	DESCRIPTION
DATE	DESCRIPTION

A 201
ET 2 OF 2



1. Plywood Sheathing
2. Adhesive / Attachment
3. Insulation Board (Polystyrene Board)

1. Plywood Sheathing
2. Green D Bag, Pepper
3. Green D Bag, Pepper
4. Smooth Coat
5. Stone Veneer
- 5.5. Mortar Joint Type S Trowel & Rake

Cleaning: Brush with a soft, dry brush or wash with water. Do not use high pressure water when needed to remove dirt and debris. Do not use acid. HIGH PRESSURE OR ABRAISIVES.

Remove 16 GA. COIL METAL TIES @ 16" O.C. EACH WAY.