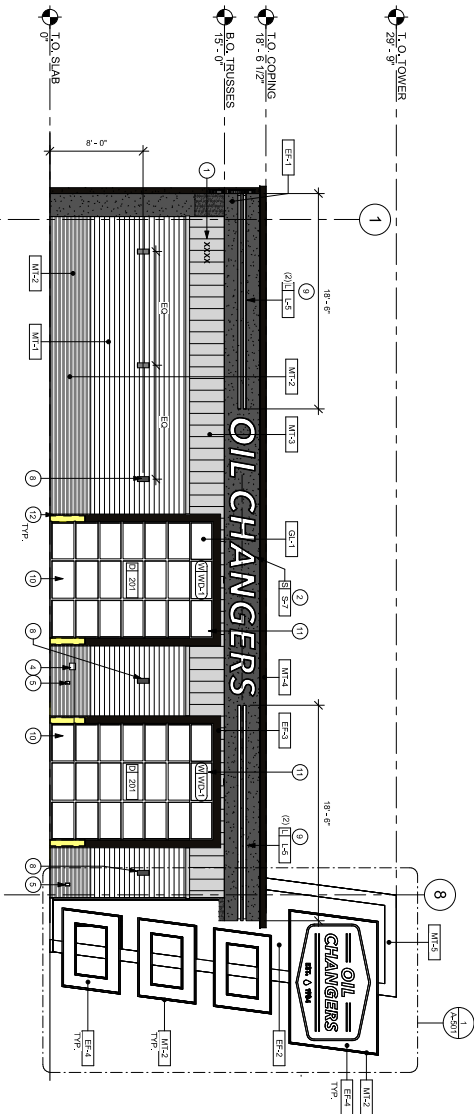


2 EXTERIOR NORTH ELEVATION  
Note: 3/8" = 1'-0"



1 EXTERIOR WEST ELEVATION  
Note: 3/8" = 1'-0"

### SHEET NOTES

- 1 ADDRESS SIGN, 12" BLACK METAL LETTERS WITH STAND-OF-FS.
- 2 ILLUMINATED BUILDING SIGNAGE.
- 3 DISCONNECT, COT ELECTRICAL, GAS AND WATER METER, PARTITION AND PLUMBING DRAWINGS FOR MORE INFORMATION.
- 4 EXTERIOR MOBE BBL. SEE PLUMBING DRAWINGS FOR MORE INFORMATION.
- 5 SPECIALTIES, SEE ELECTRICAL PLANS FOR MORE INFORMATION.
- 6 NOT USED.
- 7 NOT USED.
- 8 EXTERIOR SCIENCE.
- 9 YELLOW NEON STRIP LIGHTS IN EPS REVEAL.
- 10 10x12 OVERHEAD DOORS.
- 11 FRIED GLAZING PANEL, TO MATCH DOORS.
- 12 NEW 12" STEEL ROLLERS AT BAY DOORS. REFER TO ROLLAND DETAIL. PAINT TO MATCH P-3.

### EXTERIOR ELEVATION NOTES

- A. SIGNAGE BY TENANT UNDER SEPARATE PERMIT.
- B. GENERAL CONTRACTOR SHALL COORDINATE WITH ELECTRICAL CONTRACTOR TO PLUMBING AND INSTALL CONNECTIONS, AND BEWARE AT PANEL BOARD NECESSARY TO SERVICE SIGNAGE.
- C. GENERAL CONTRACTOR TO PROVIDE WOOD STUD ALONG SIGN ELEVATION TO SUPPORT SIGNAGE.

### RESPONSIBILITY LEGEND

- |                       |                 |
|-----------------------|-----------------|
| GC GENERAL CONTRACTOR | VO VENDOR       |
| LL LANDLORD           | OC OIL CHANGERS |

### EXTERIOR WALL TREATMENT SCHEDULE

DESIGN ID	DESCRIPTION	FINISH BY	INST. BY	COMMENTS
EF-1	PRE-FINISHED - DARK BRONZE COPING	GC	GC	
EF-1	CEMENT PLASTER - MATCH SWINGS SEAL SIGN	GC	GC	EPS COLOR SPEC INCLUDES FOR FINISHING. FINAL SPECIFICATION TO BE CONFIRMED BY ARCHITECT.
EF-2	CEMENT PLASTER - MATCH SWINGS DRIVE BRONZE	GC	GC	EPS COLOR SPEC INCLUDES FOR FINISHING. FINAL SPECIFICATION TO BE CONFIRMED BY ARCHITECT.
EF-3	CEMENT PLASTER - MATCH SWINGS BLACK MUDGE	GC	GC	EPS COLOR SPEC INCLUDES FOR FINISHING. FINAL SPECIFICATION TO BE CONFIRMED BY ARCHITECT.
EF-4	CEMENT PLASTER - MATCH SWINGS BERRY WHITE	GC	GC	EPS COLOR SPEC INCLUDES FOR FINISHING. FINAL SPECIFICATION TO BE CONFIRMED BY ARCHITECT.
ME-1	PRE-FINISHED - POWERCOAT MATCH SWINGS CHEERFUL - 100% FELSION	GC	GC	
MT-5	PRE-FINISHED - STONE WHITE POWERCOAT	GC	GC	
MT-1	PRE-FINISHED - STONE WHITE POWERCOAT	GC	GC	
MT-3	PRE-FINISHED - SLATE GRAY POWERCOAT	GC	GC	

### SIGNAGE SCHEDULE - "S"

DESIGN ID	COUNT	DESCRIPTION	FINISH BY	INST. BY	COMMENTS
S-1	10	12" STEEL ROLLAND BUILDING WALL SIGN	GC	GC	REFER TO DETAIL ON SHEET PLANO AND INFORMATION SHEETS FOR ADDITIONAL INFORMATION.
S-2	1	SIGN - THANK YOU FOR ONLY	VO	VO	REFER TO DETAIL FOR ADDITIONAL INFORMATION.
S-3	1	SIGN - DIRECTORIAL	VO	VO	REFER TO DETAIL FOR ADDITIONAL INFORMATION.
S-4	2	SIGN - DRIVE HARRY WALL SIGN	VO	VO	REFER TO DETAIL FOR ADDITIONAL INFORMATION.
S-5	1	MONUMENT SIGN WITH EST. 1944	GC	GC	REFER TO DETAIL FOR ADDITIONAL INFORMATION.
S-6	1	MONUMENT SIGN	GC	GC	REFER TO DETAIL FOR ADDITIONAL INFORMATION.



NEWGROUND INTERNATIONAL, INC.  
15450 S. OLYMPIA PARKWAY, SUITE 300  
CHANDLER, AZ 85226  
(480) 953-8883

ARCHITECT  
RICHARD AVERY  
125 S. CLARK STREET, SUITE 700  
CHANDLER, AZ 85226  
(480) 953-8883

CONSULTANTS  
CASE ENGINEERING, INC.  
ADDRESS  
CITY, STATE, ZIP CODE

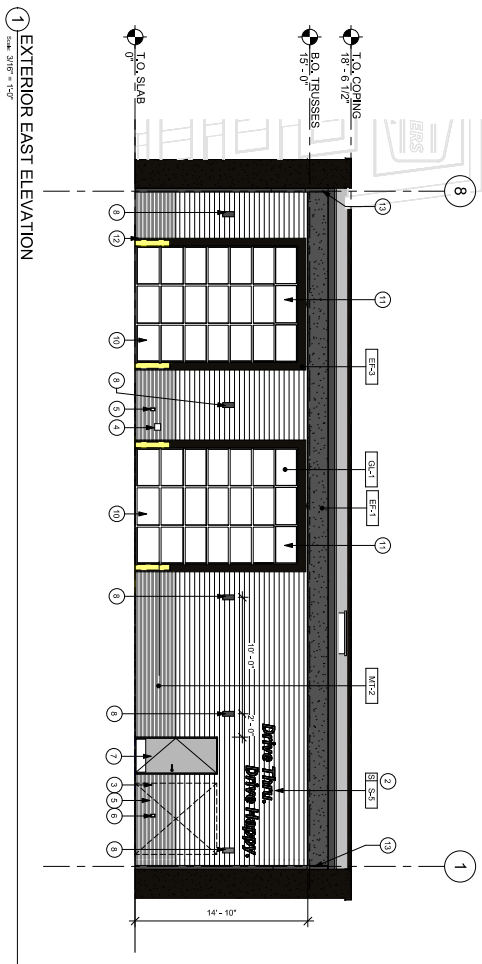
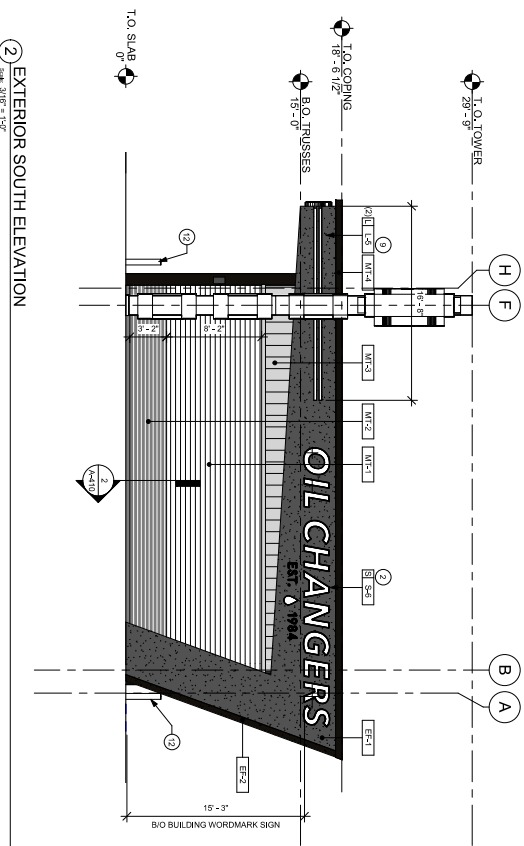


DO NOT REPRODUCE  
THIS DRAWING OR ANY PART  
HEREOF WITHOUT THE WRITTEN  
CONSENT OF THE ARCHITECT.  
ANY REPRODUCTION OF THIS  
DRAWING WITHOUT THE WRITTEN  
CONSENT OF THE ARCHITECT  
IS A VIOLATION OF THE  
ARCHITECT'S PROFESSIONAL  
ETHICS AND MAY BE SUBJECT  
TO PROSECUTION FOR VIOLATION  
OF THE ARCHITECT'S  
PROFESSIONAL ETHICS.

PROJECT NAME:  
OIL CHANGERS - (2 BAY)  
WEST JORDAN  
PROJECT ADDRESS:  
7800 S & 4800 W  
WEST JORDAN, UTAH

REV	DATE	DESCRIPTION
1	10/19/2022	ISSUE DATE
2	10/19/2022	ACQUITTANCE DATE
3	10/19/2022	DESIGN BY: B. LEBEL, URSALIS
4	10/19/2022	CHECKED BY: R. AVERY, POWER
5	10/19/2022	PROJECT NO.

SHEET NUMBER  
A-201



SHEET NOTES

3. NOT BEE.
4. ILLUMINATED BUILDING SIGNAGE.
5. DISCREPANT (E.g. ELECTRICAL, GAS AND WATER METER, PAINT TO MATCH WALLS, WALL COLOR, REFER TO CATALOGUE, TYPING OF SIGNAGE, PHOTOGRAPHY).
6. EXTENSION HOSE AND SET PLUMBING DRAWINGS FOR WORKMAN INFORMATION.
7. JUNCTION BOX, SEE ELECTRICAL PLANS FOR MORE DRAWINGS. CONSIDER IT A WARNING WITH DRYBAT.
8. NOXIOUS ROLOCATION, CORRELATE LOCATION WITH THE DEPARTMENT. MONITOR, DODGE, DODGE, RECESSED BLOCK.
9. REAR EGRESS DOOR, SEE DOOR PLAN AND SCHEDULE.
10. EXTENSIVE SCENE.
11. YELLOW LIGHT REVEAL IN PERS. WITH YELLOW NEON STRIPS LIGHTS.
12. 10/11/12 OVERHUNG DOORS.
13. NAMED GLAZING PANELS TO MATCH DOORS.
14. NEW STEEL ROOFING PANELS TO MATCH DOORS.
15. BELL AND CRITCH PAINT MATCH TO P13.
16. GUTTER AND DOWNPOUTS.

## EXTERIOR ELEVATION NOTES


- A. SIGNAGE BY TENANT UNDER SEPARATE PERMIT.
- B. GENERAL CONTRACTOR SHALL COORDINATE WITH ELECTRICAL CONTRACTOR TO FURNISH AND INSTALL ELECTRICAL CIRCUITS INCLUDING ALL CONDUIT, WIRE, CONNECTIONS, AND BREAKER AT PANEL BOARD NECESSARY TO SERVICE SIGNAGE.
- C. GENERAL CONTRACTOR TO PROVIDE WOOD STUDS, BRACKETS OR EQUIVALENT TO SUPPORT SIGNAGE.

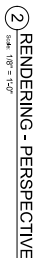
## RESPONSIBILITY LEGEND

LL LANDLORD OC OIL CHANGERS

EXTENSION WALL TREATMENT SCHEDULE					
REGION ID	DESCRIPTION	FINISH	INST. BY	INST. BY	COMMENTS
CEMENT M1/4	PRE-FINISHED, DARK BROUZE COATING	GC	GC	GC	
CEMENT E-1	CEMENT PLASTER MATCH SW/10'S SEAL SHUT	GC	GC	GC	RE-DO REFINISH UNDER 90% FINISHING
CEMENT E-2	CEMENT PLASTER MATCH SW/10'S INSIDE BROUZE	GC	GC	GC	RE-DO REFINISH UNDER 90% FINISHING
CEMENT E-3	CEMENT PLASTER MATCH SW/10'S BLACK MARCO	GC	GC	GC	RE-DO REFINISH UNDER 90% FINISHING
CEMENT E-4	CEMENT PLASTER MATCH SW/10'S EIDER WHITE	GC	GC	GC	RE-DO REFINISH UNDER 90% FINISHING
CEMENT M1/6	PRE-FINISHED, POWERGRAB MATCH SW/10'S CHEERFUL YELLOW	GC	GC	GC	FINAL SPECIFICATIONS TO BE COMPLETED BY AOR.
STONE M1/2	PRE-FINISHED, STONE WHITE POWDERCOAT	GC	GC	GC	
STONE M1/2	PRE-FINISHED, MARBLE BROUZE POWDERCOAT	GC	GC	GC	
STONE M1/2	PRE-FINISHED, SATIN GRAY POWDERCOAT	GC	GC	GC	

GENERAL B		COUNT	DESCRIPTION	FINALLY	INST. BY	COMMENTS
S-3	10	6 STEEL JOIST AND	OC	OC		
S-4	1	BUILDING WALL SON	OC	OC		REFER TO DETAILS OF SHEET A-301 AND STRUCTURAL SHEETS FOR ADDITIONAL INFORMATION
SCAFFOLD						
S-2	1	SON, THANK YOU, ERT ONLY	VO	VO		REFER TO DETAILS FOR ADDITIONAL INFORMATION
S-3	1	SON, DIRECTIONAL	VO	VO		REFER TO SITE DETAILS FOR ADDITIONAL INFORMATION
S-2	1	ONE TIE, TIE, DIRECTIONAL	VO	OC		REFER TO SON'S DETAILS
S-4	2	W/COMPASS SON WITH EST. 1984	VO	OC		REFER TO EXTERIOR SON DETAILS
S-2	1	W/COMPASS SON	OC	OC		REFER TO EXTERIOR SON DETAILS
S-4	1	W/COMPASS SON	OC	OC		REFER TO EXTERIOR SON DETAILS
S-2	1	W/COMPASS SON	OC	OC		REFER TO EXTERIOR SON DETAILS

NEWBORG INTERNATIONAL, INC. 1440 S CRYSTAL DRIVE, SUITE 300 CHANDLER, AZ 85226-1100 Phone: (480) 944-1100		
<b>ARCHITECT</b> RICHARD MERRY 125 S. CLARK STREET, SUITE TWO CHANDLER, AZ 85226-1100 Phone: (480) 944-1100		
<b>CONSULTANTS</b> CASE ENGINEERING, INC. ADDRESS: CITY, STATE, ZIP CODE		
		
APPROVED FOR THE ARCHITECT: _____ DO NOT REPRODUCE THIS DRAWING WITHOUT THE WRITTEN APPROVAL OF THE ARCHITECT. THIS PROJECT IS A CONTRACT DOCUMENT AND SHALL NOT BE USED FOR ANY OTHER PURPOSES WITHOUT THE WRITTEN APPROVAL OF THE ARCHITECT.		
PROJECT NAME: <h1>OIL CHANGERS - (2 BAY) WEST JORDAN</h1>		
PROJECT ADDRESS: 7800 S & 4800 W WEST JORDAN, UTAH		
REV.	DATE	DESCRIPTION
ISSUE DATE: 10/19/2022		
ARCHITECT: ADM		
DRAWN BY: E. LEBLANC, HMOULES		
CHECKED BY: R. MERRY, HMOWL		
PROJECT NO.:		
EXTERIOR ELEVATIONS		
SHEET NUMBER:		
<b>A-202</b>		



125 S. CLARK STREET, SUITE 70  
CHICAGO, IL 60603

PHONE 312.523.0439

**CONNELL TANTE**

**CASE ENGINEERING, INC.**

796 MERUS COURT  
ST. LOUIS, MO 63026  
PHONE 636.349.1600



**DO NOT REPRODUCE**  
THIS DOCUMENT CONTAINS  
CONFIDENTIAL INFORMATION,  
AND IS AN INSTRUMENT OF  
SERVICE AND PROPERTY OF  
THE ARCHITECT. IT SHALL NOT  
BE USED ON OTHER  
PROJECTS OF FOR  
EXTENSION OF THIS PROJECT  
WITHOUT THE ARCHITECTS  
WRITTEN APPROVAL.

PROJECT NAME:  
OIL CHANGERS - (2 BAY)  
WEST JORDAN  
PROJECT ADDRESS:  
7800 S & 4800 W  
WEST JORDAN, UTAH

REV	DATE	DESCRIPTION

ISSUE DATE: 10/19/2022

ARCHITECT: AOR

DRAWN BY: B. LABRAGA, MORALE

CHECKED BY: R. AVENTURA, HOWELL

PROJECT NO:

SHEET TITLE:

**PERSPECTIVES -  
FOR REFERENCE  
ONLY**

SHEET NUMBER:

A-200